



TOM POUCE

Gozzo 35 Apremare





## TOMPOUCE



Gozzo 35 Apremare: Italian charm on the water.

Treat yourself to an unforgettable getaway aboard this iconic symbol of Mediterranean style. This 2022 model combines traditional design with modern comfort, making it perfect for day trips or cruises along the Côte d'Azur.

Its spacious deck layout, generous sundeck and elegant cabin guarantee a relaxing experience for couples, families or friends alike. Its smooth sailing, even at low speeds, makes it accessible to all, offering excellent stability so you can fully enjoy the sea.

Whether you're enjoying lunch at sea, taking in the sunset over Saint-Tropez, or spending the day exploring the Lérins Islands, the Gozzo 35 promises you a moment of pure Dolce Vita.





TOMPOUCE







TOMPOUCE







TOMPOUCE

















TOMPOUCE







TOMPOUCE











TOMPOUCE















TOMPOUCE











TOMPOUCE







TOMPOUCE







TOMPOUCE







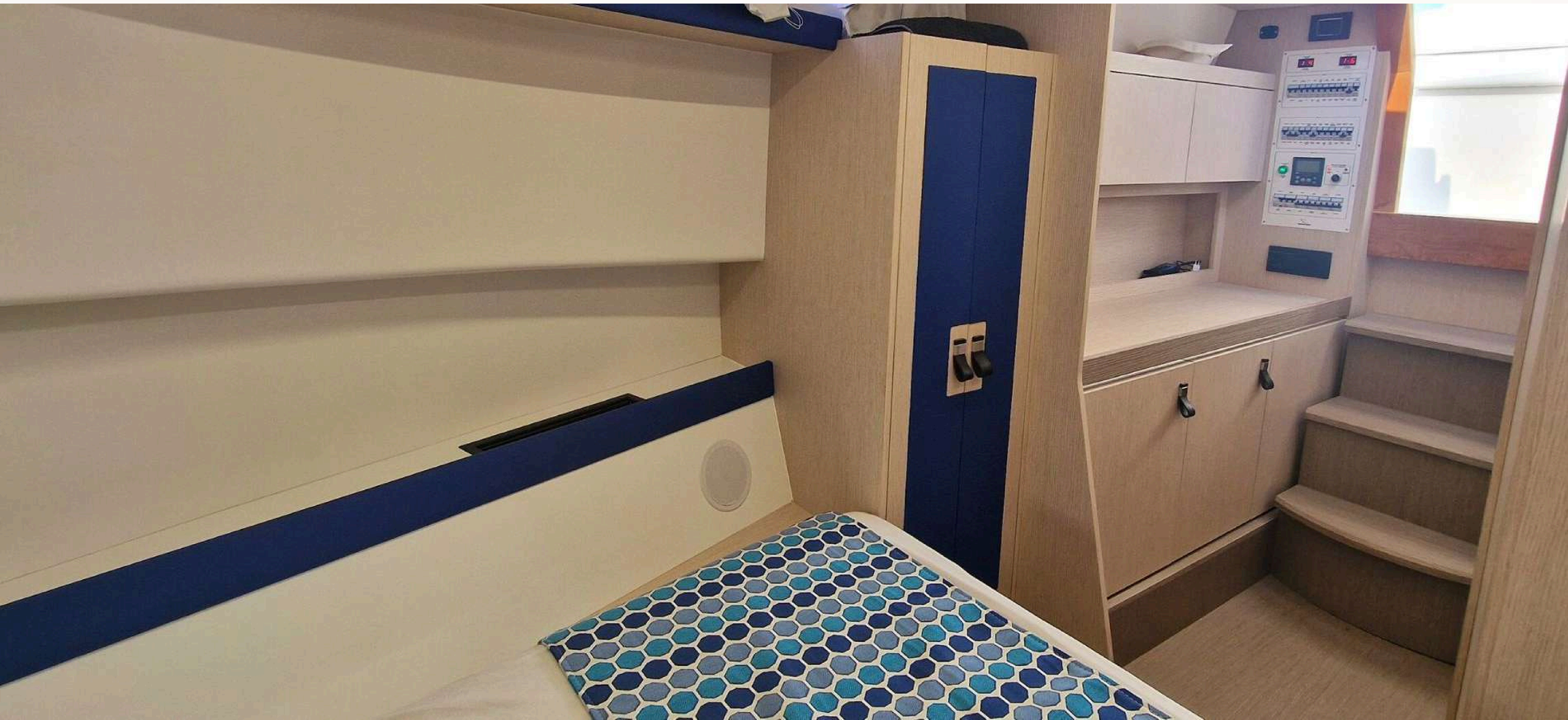




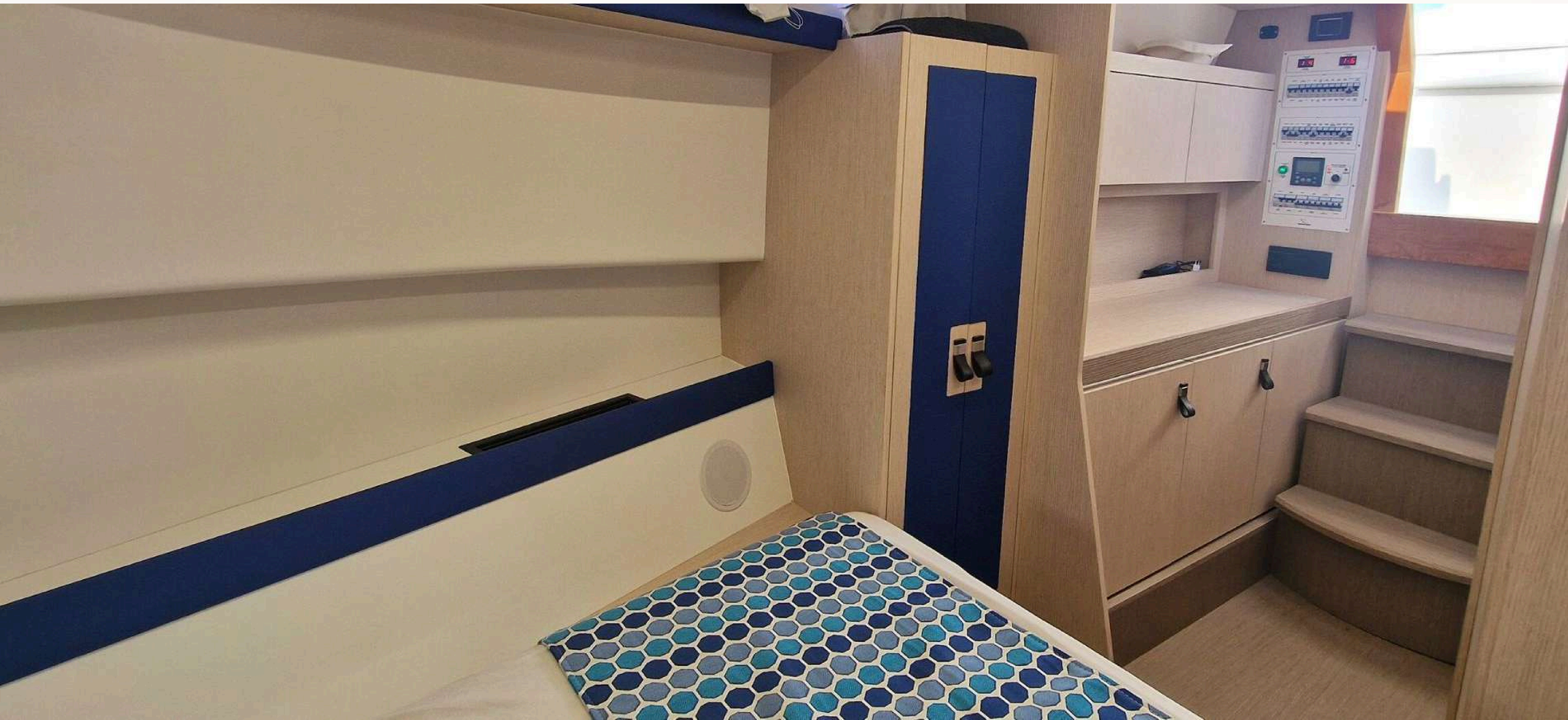














# TOMPOUCE

## SPECIFICATIONS

**BUILDER :** Apreamare

**MODEL:** Gozzo 35

**YEAR:** 2022

**LENGTH:** 11.20 M

**BEAM:** 3.70 M

**DRAFT:** 0.90 M

**ENGINES:** 2 X Cummins 350 CV

**CONSUMPTION:** 85 L / H @24 Kt

**PRICE vat paid :** 1 910 € skipper included

Cannes Antibes Mandelieu package from golfe juan or  
Cannes: 2 490 € vat paid \*

Monaco or Saint Tropez package from golfe juan or  
Cannes: 2 810 € vat paid \*



9



1 Double bed



Golfe juan



1



24 Kt cruise



French riviera

*\*including captain, fuel, soft, laundry and fruit basket*



## SPECIFICATIONS

### Exterior Equipment

Spacious foredeck sunbed  
Panoramic bench with retractable L-shaped table (cockpit)  
Cockpit refrigerator  
Hot/cold shower at the stern  
Protective covers  
8 fenders with covers  
Exterior lighting  
Wide side decks with integrated handrails

### Galley Outdoor

Stainless steel sink  
Cooking plate  
Countertop/work surface  
Refrigerator (in the cockpit)  
Storage for dishes and utensils

### Interior Equipment

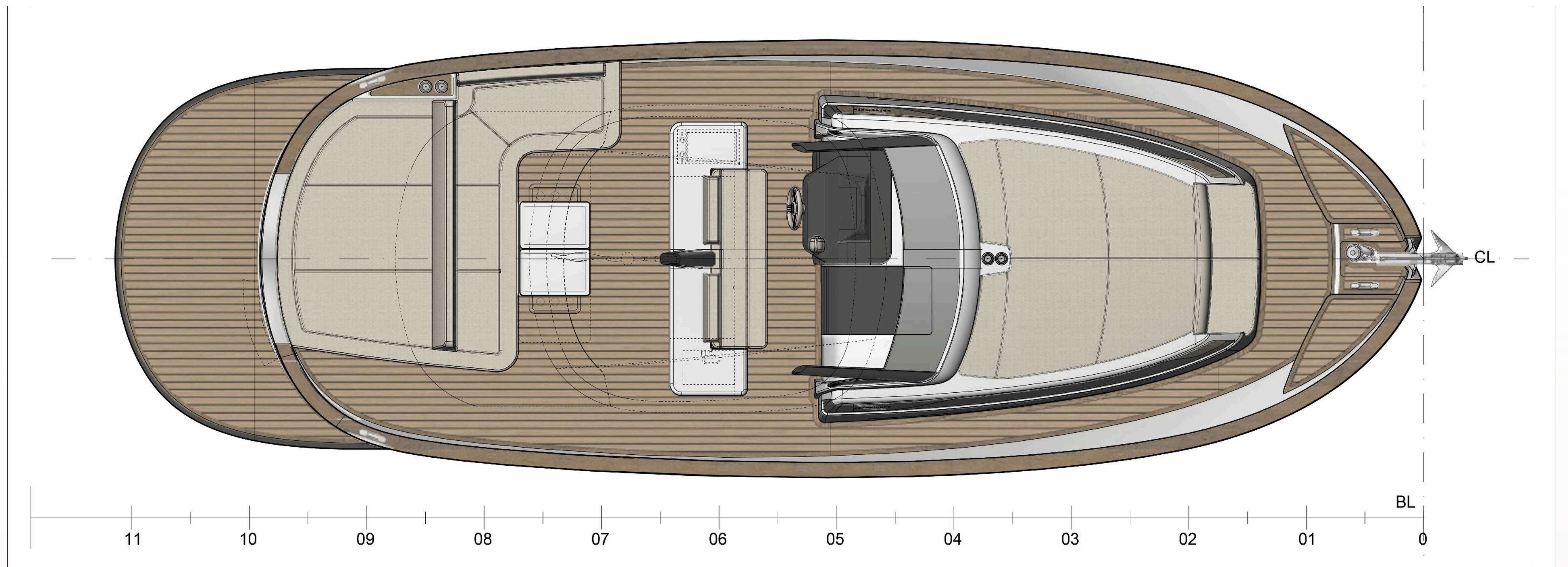
LED lighting  
Integrated audio system  
High-end wood finishes  
Multiple storage compartments  
Open space with generous headroom

### Cabin

Central double bed  
Side and under-bed storage  
Ambient lighting  
Opening portholes  
Ensuite bathroom with separate shower, sink, and electric toilet

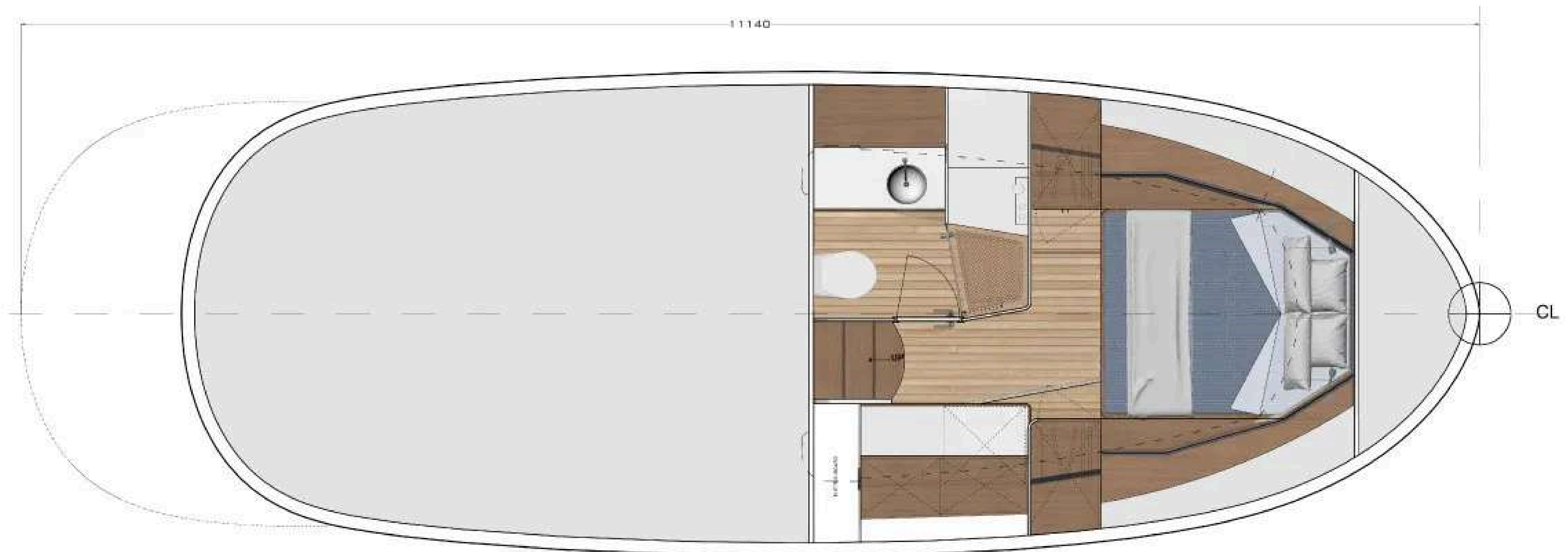


LAYOUT





LAYOUT







Aquila yachting  
29 Port Camille Rayon 06220 Golfe Juan France  
[www.aquilayachting.com](http://www.aquilayachting.com)

Contact: +33(0)6 20 95 02 33

Mail: [charter@aquilayachting.com](mailto:charter@aquilayachting.com)

Follow us on social networks

